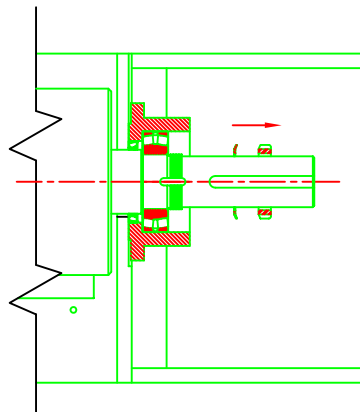


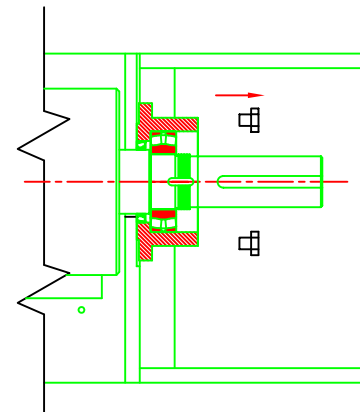
STEP No. 1

REMOVE HOUSING CAP SCREWS
AND HOUSING CAP.



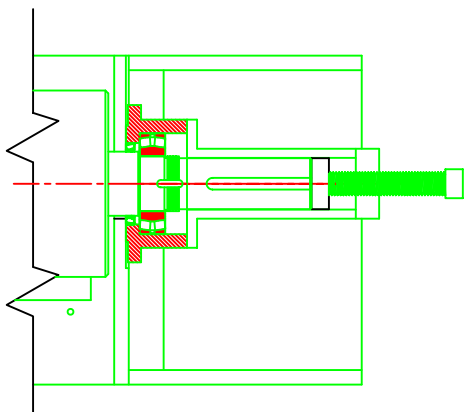
STEP No. 2

REMOVE BEARING NUT AND WASHER



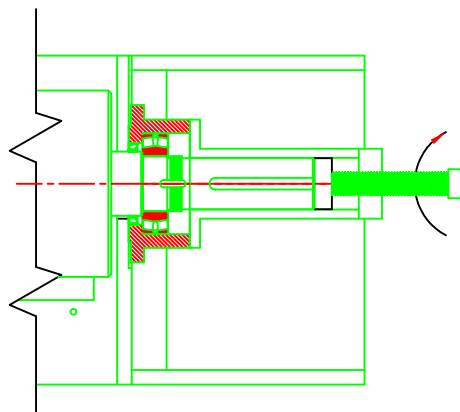
STEP No. 3

REMOVE BEARING HOUSING SCREWS



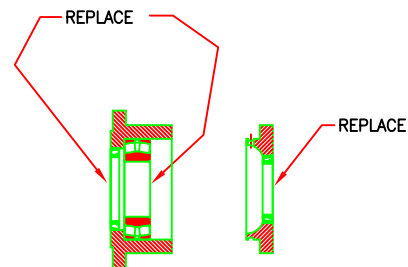
STEP No. 4

ATTACH PULLER WITH BEARING
HOUSING CAP SCREWS



STEP No. 5

REMOVE HOUSING WITH BEARING
BY TURNING SCREW CLOCKWISE



STEP No. 6

BEFORE INSTALLING BEARING HOUSING
REPLACE BEARING AND ALL SEALS

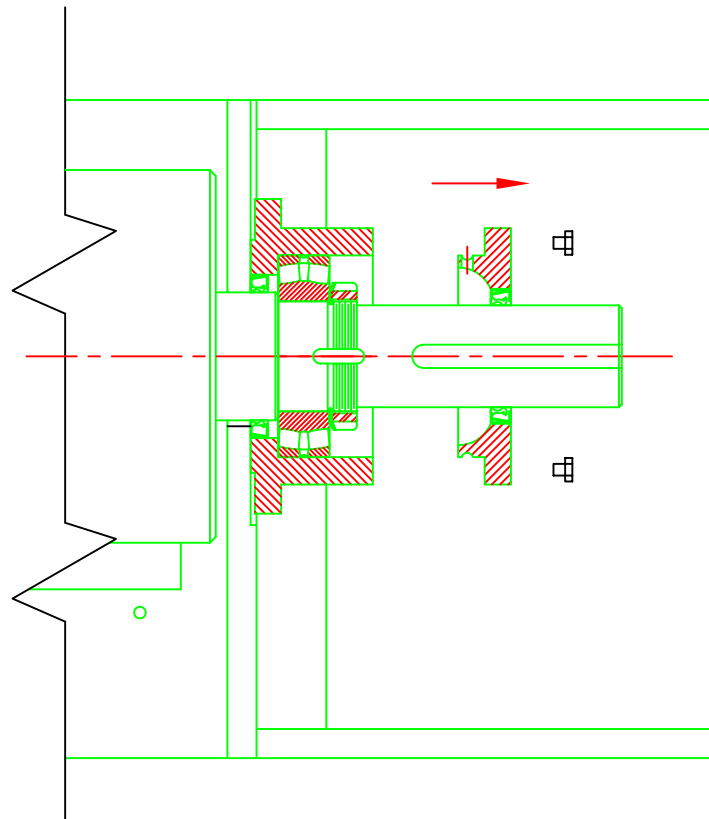
REV.	CHANGE	DATE	BY

MATERIAL	USED ON UNIT
PATTERN NO.	



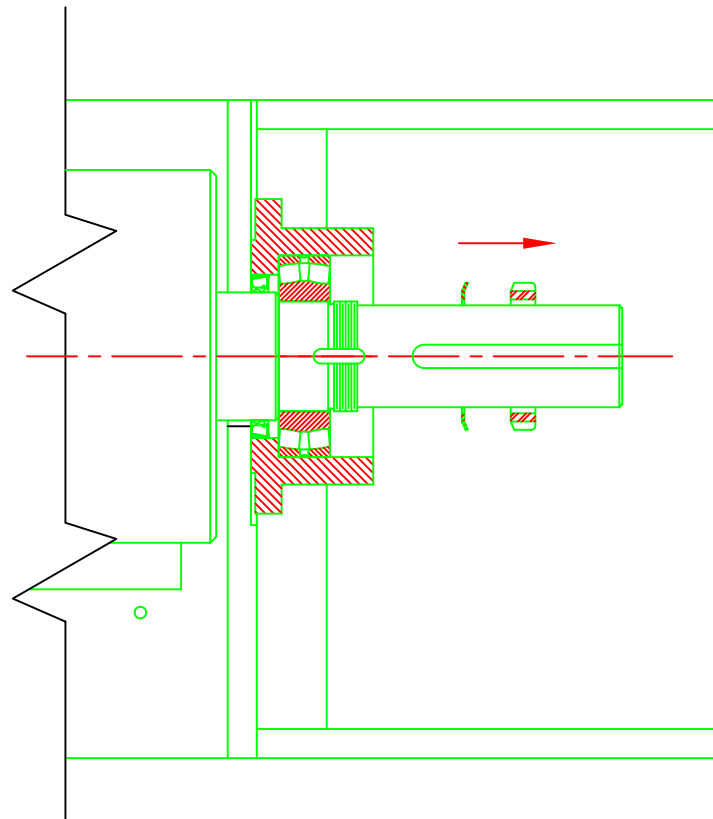
NAME OF PART
BEARING REMOVAL INSTRUCTIONS FOR
MODEL 800/900 GRANULIZER

DRAWN	FJO	SCALE
DATE	12/20/01	NTS
CHECKED		
PART NO.	9CG-4544	C



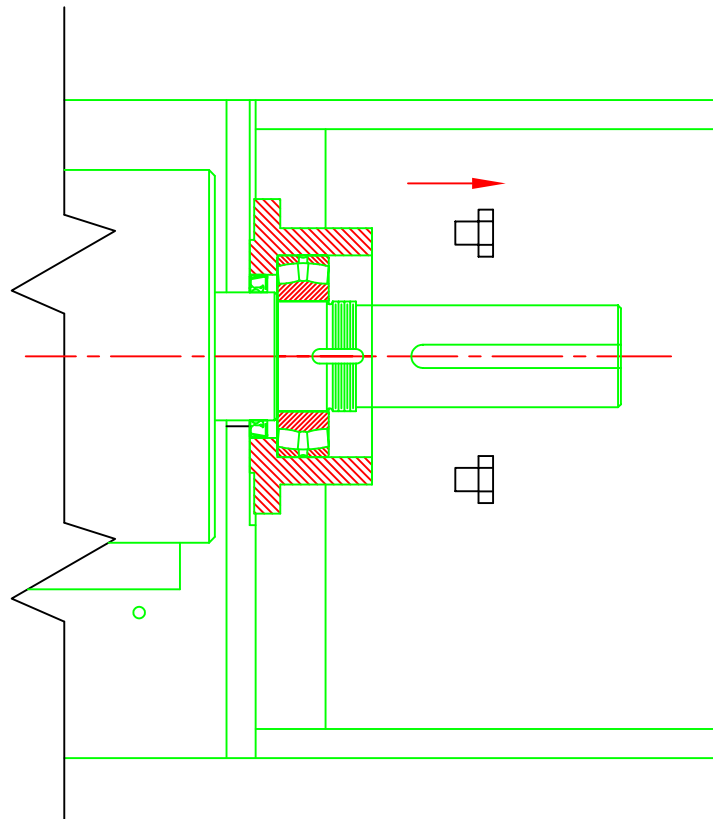
STEP No. 1

REMOVE HOUSING CAP SCREWS
AND HOUSING CAP.



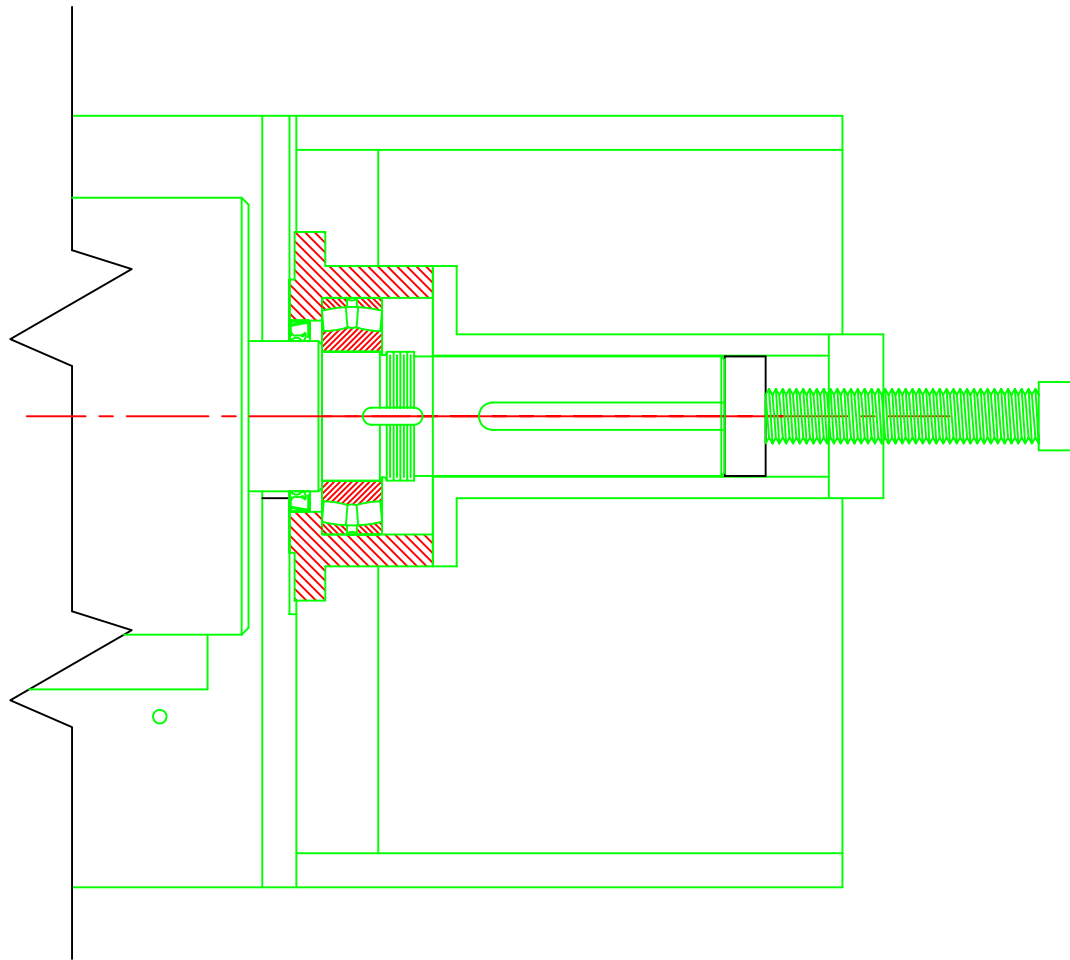
STEP No. 2

REMOVE BEARING NUT AND WASHER



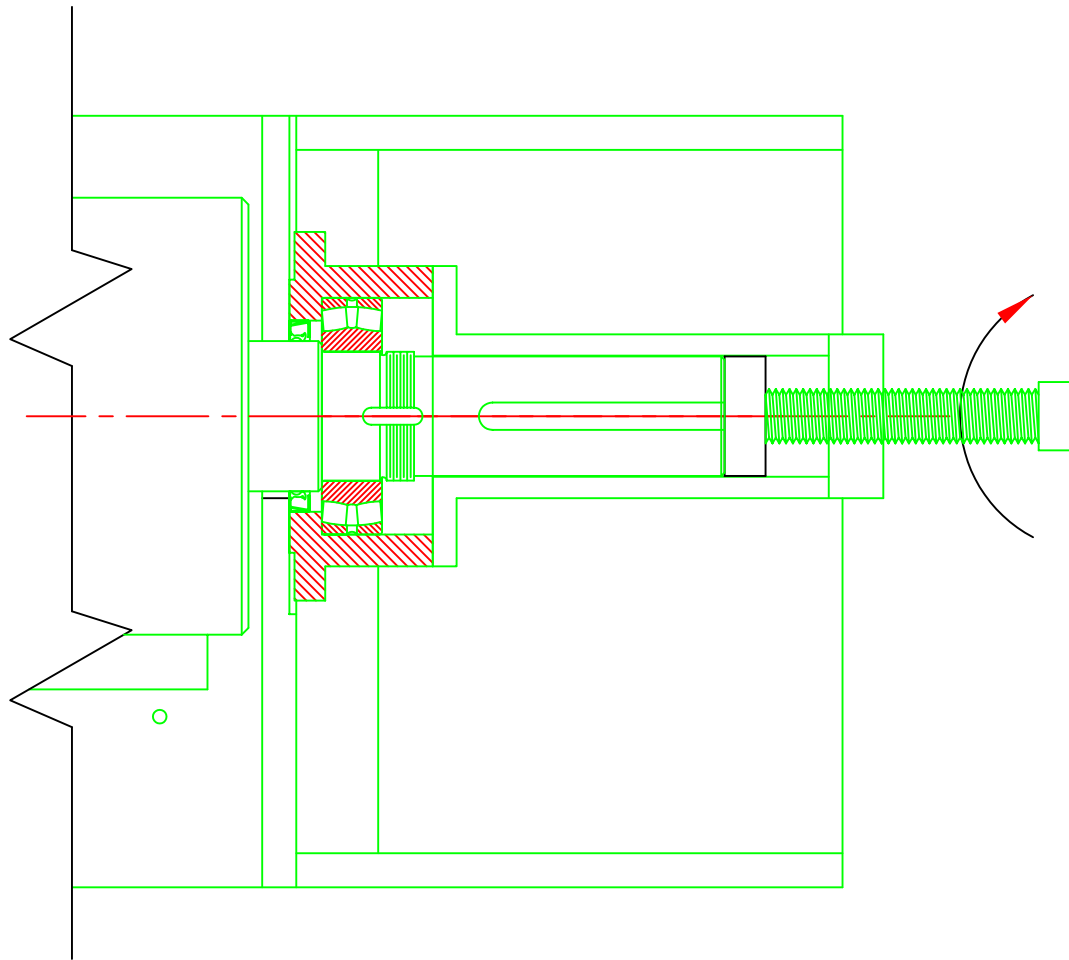
STEP No. 3

REMOVE BEARING HOUSING SCREWS



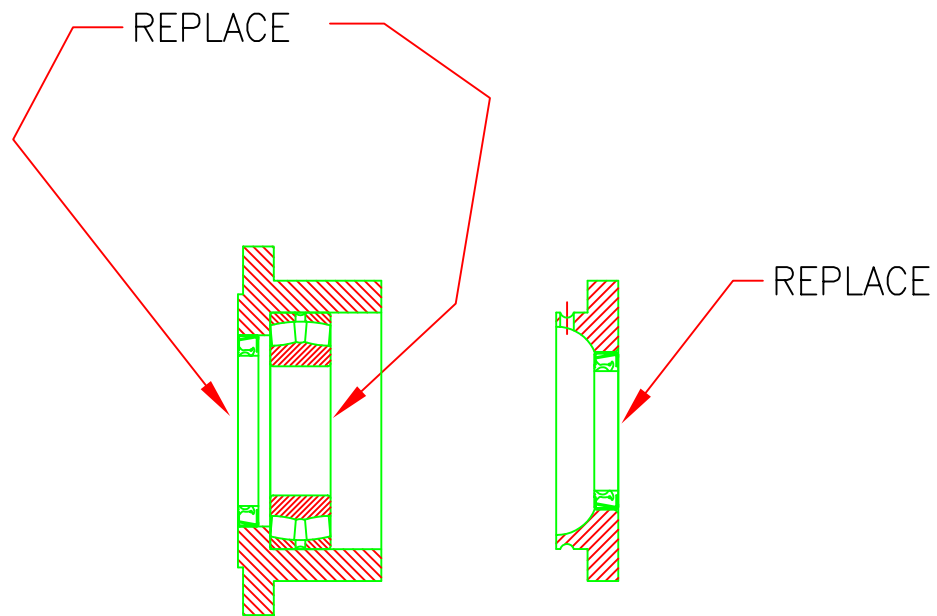
STEP No. 4

ATTACH PULLER WITH BEARING
HOUSING CAP SCREWS



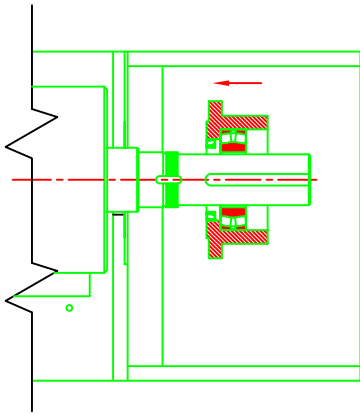
STEP No. 5

REMOVE HOUSING WITH BEARING
BY TURNING SCREW CLOCKWISE



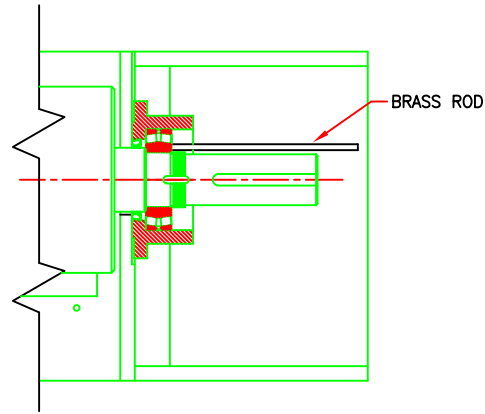
STEP No. 6

BEFORE INSTALLING BEARING HOUSING
REPLACE BEARING AND ALL SEALS



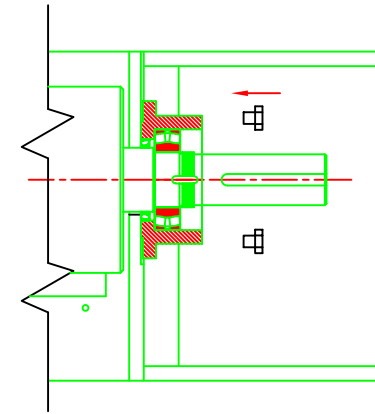
STEP No. 1

REPLACE BEARING HOUSING WITH NEW BEARING AND SEALS ON SHAFT BY HAND



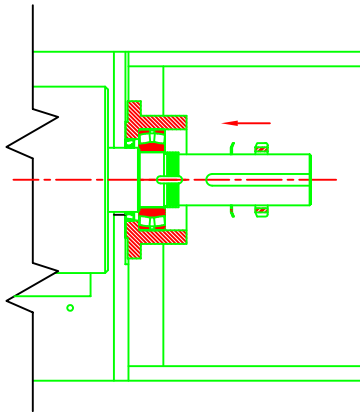
STEP No. 2

TAP BEARING INNER RACE WITH BRASS ROD. TO DRIVE BEARING HOUSING AGAINST FRAME.



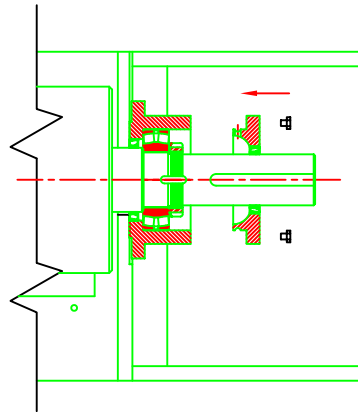
STEP No. 3

REPLACE BEARING HOUSING SCREWS



STEP No. 4

REPLACE BEARING NUT AND WASHER



STEP No. 5

REPLACE BEARING CAP AND SCREWS

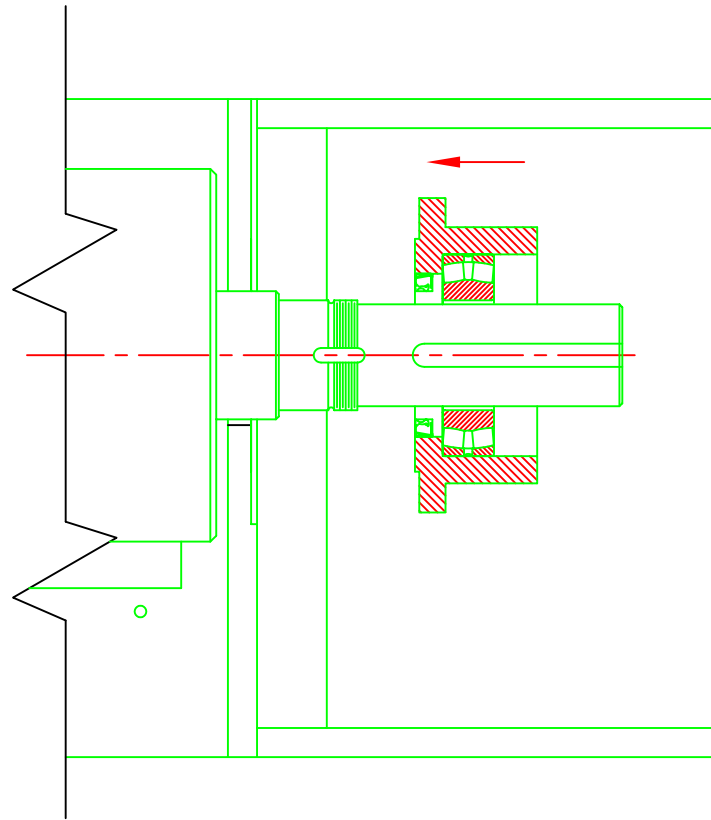
REV.	CHANGE	DATE	BY

MATERIAL	USED ON UNIT
PATTERN NO.	

MP **MODERN PROCESS EQUIPMENT, Inc.**
3125 South Kelle Avenue, Chicago, Illinois 60625

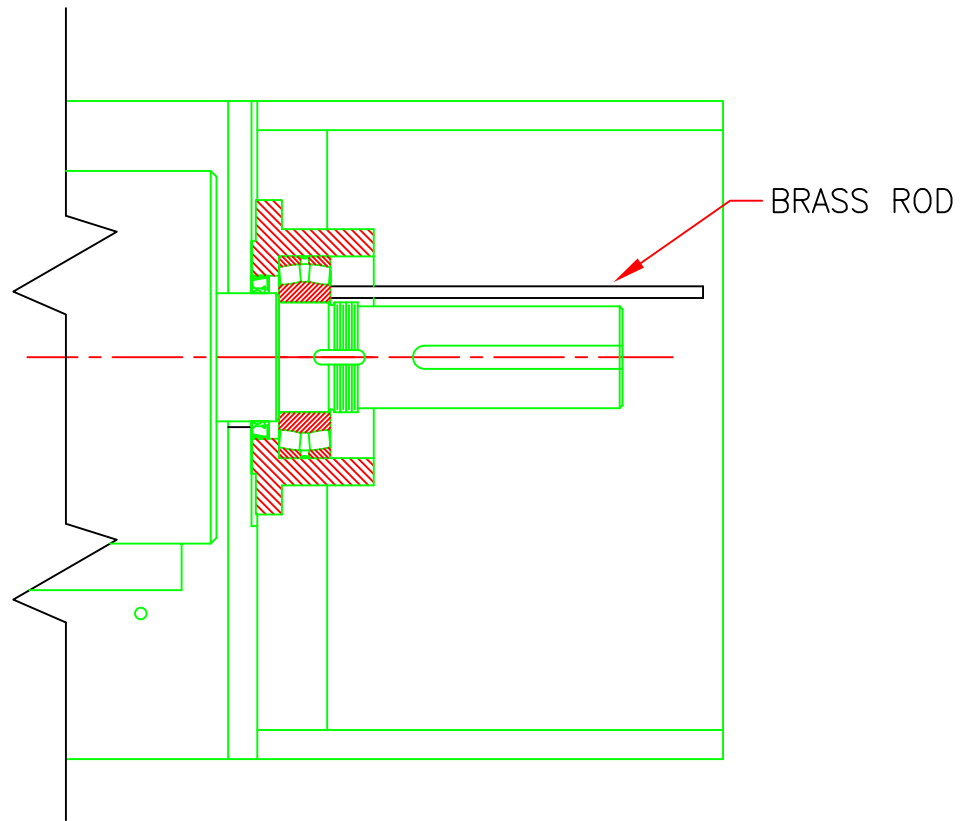
NAME OF PART: BEARING INSTALLATION INSTRUCTIONS FOR MODEL 800/900 GRANULIZER

DRAWN	FJO	SCALE
DATE	12/20/01	NTS
CHECKED		
PART NO.	9CG-4545	C



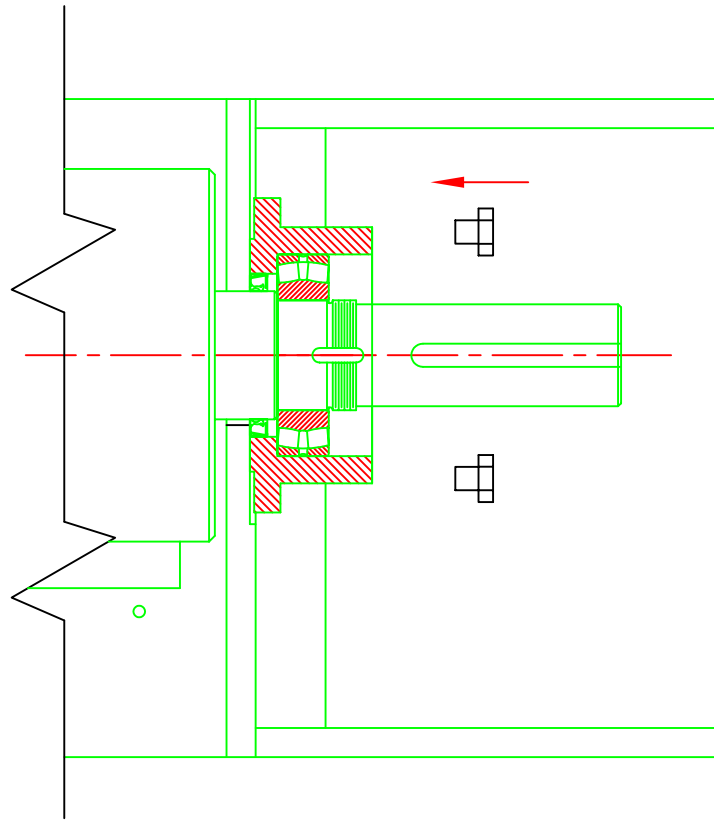
STEP No. 1

REPLACE BEARING HOUSING WITH NEW
BEARING AND SEALS ON SHAFT BY HAND



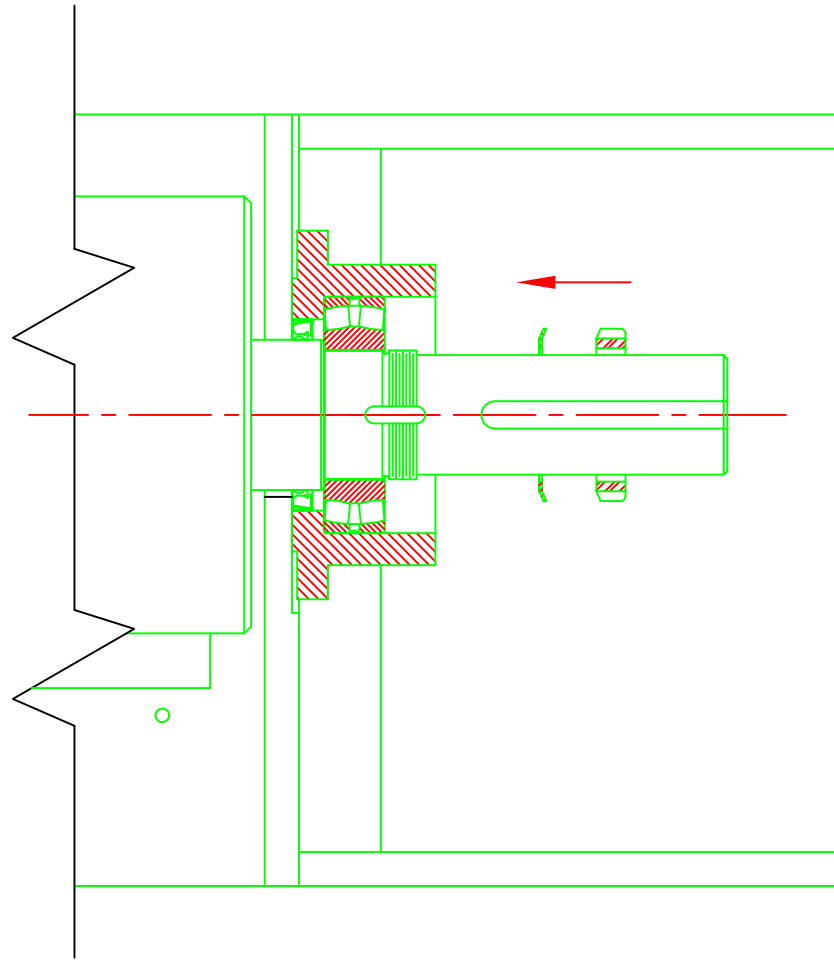
STEP No. 2

TAP BEARING INNER RACE WITH
BRASS ROD. TO DRIVE BEARING
HOUSING AGAINST FRAME.



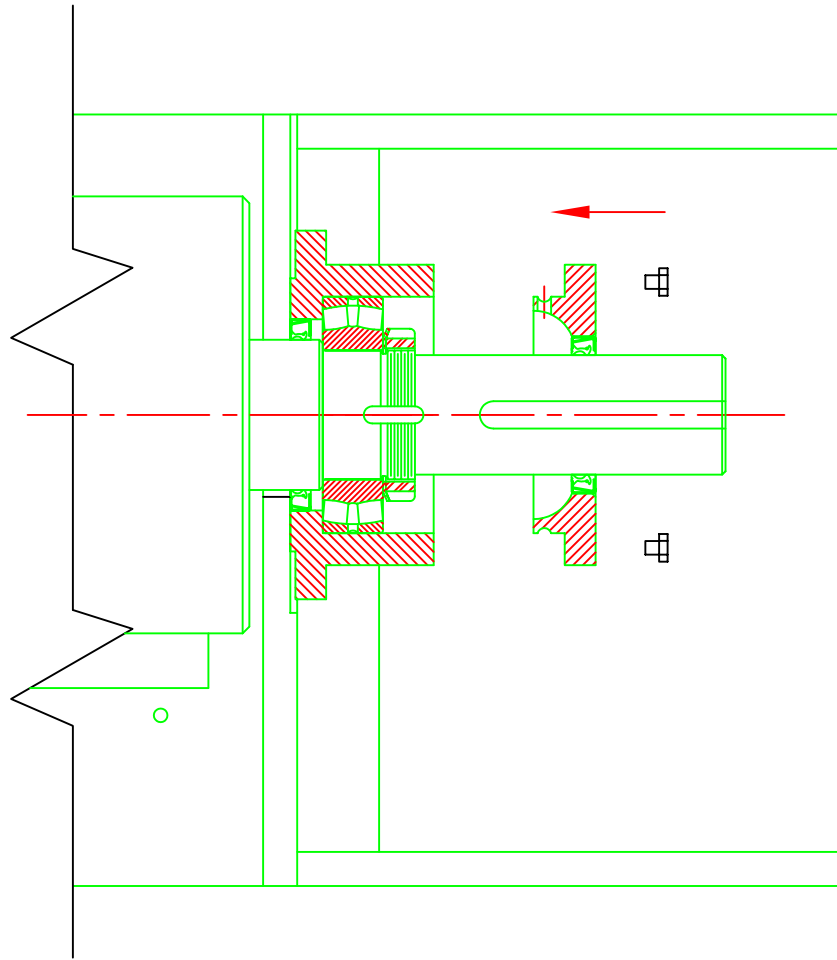
STEP No. 3

REPLACE BEARING HOUSING SCREWS



STEP No. 4

REPLACE BEARING NUT AND WASHER



STEP No. 5

REPLACE BEARING CAP AND SCREWS